

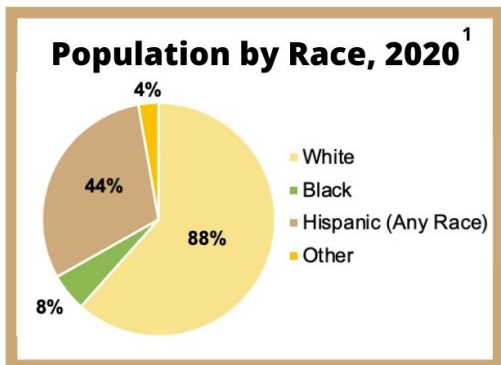
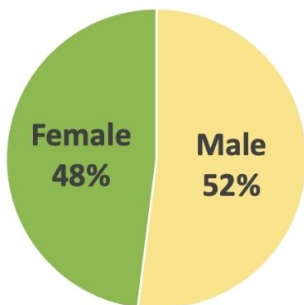
# 2022 HARDEE COUNTY HEALTH PROFILE

## Community demographics in 2020

**27,571**

people living in Hardee County<sup>1</sup>

### Population by Gender, 2020<sup>1</sup>



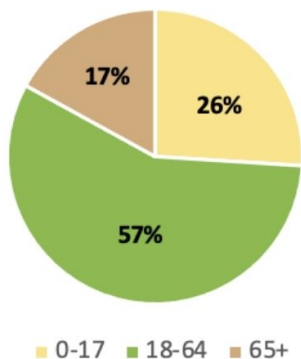
**79.5 Years**  
Life expectancy<sup>2</sup>

**35.4 Years**  
Median age<sup>2</sup>

**\$40,165**  
Median income<sup>3</sup>

**31.4%**  
Adults with any disability<sup>4</sup>

### Population by Age, 2020<sup>1</sup>



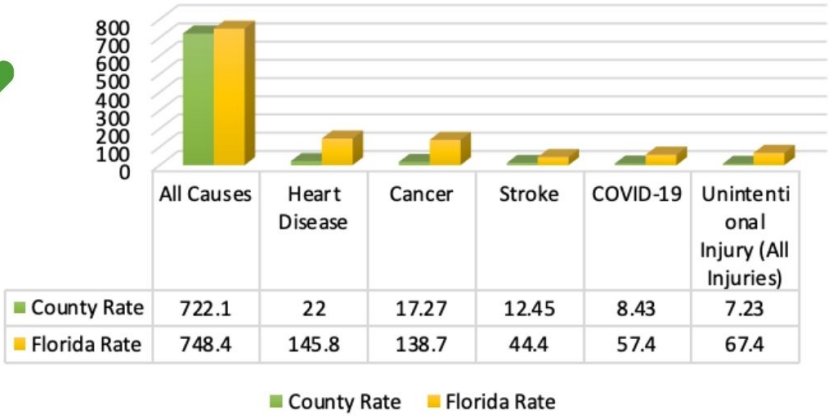
**1st quartile** 5% more kindergarteners immunized in Hardee county than the state

**4th quartile** Median household income in Hardee County is \$17,538 less than the state average

Hardee county rates of teen mothers (ages 15-19) is twice that of Florida.

# Health Status

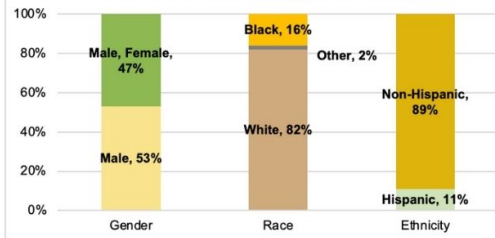
## Age-adjusted Rates Top 5 Leading Causes of Death, 2020<sup>1</sup>



## Top 2 Leading Causes of Death, 2020<sup>1</sup>

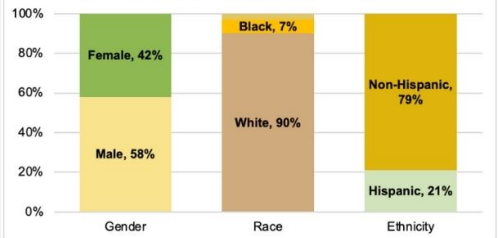
1

Heart Disease, By Gender, Race, Ethnicity



2

Cancer, By Gender, Race, Ethnicity



## COVID-19<sup>5</sup> (week of July 22-28, 2022)

96  
Cases

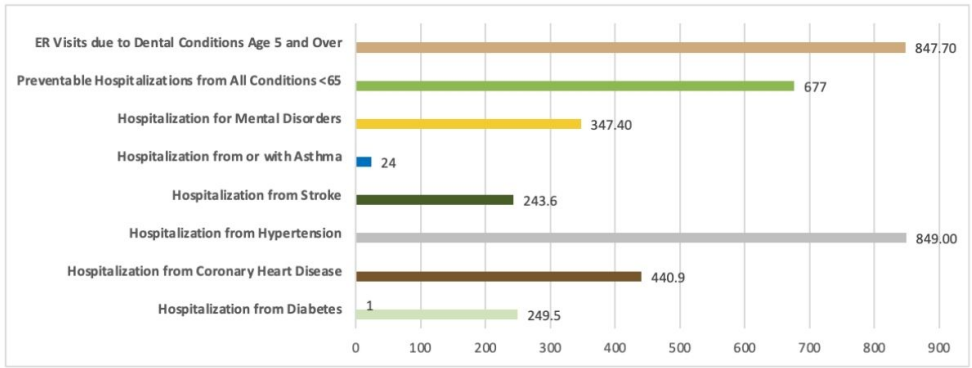
11,694  
Hardee County  
Residents Fully  
Vaccinated

52%  
Individuals  
12+ Fully  
Vaccinated

77,565 Statewide deaths since March 2020

The COVID-19 pandemic began in January 2020. Individuals can protect themselves and others through vaccination as well as through safety measures such as social distancing, wearing a mask, and staying home when sick. At-home testing is now more readily available and may have an impact on cases reported. For the most up to date data on COVID-19, visit [cdc.gov/coronavirus](https://www.cdc.gov/coronavirus)

# Hospitalization Rates (per 100,000)<sup>6</sup>



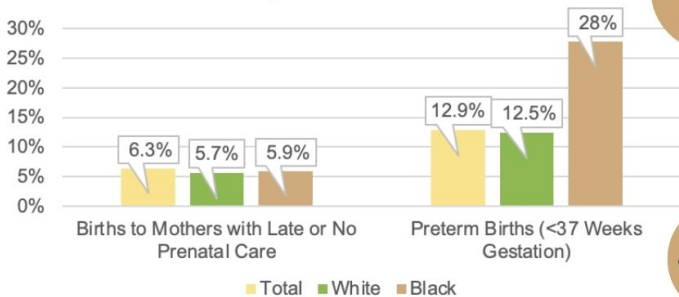
## Behavioral risk factors<sup>4</sup>

Behavioral risk factors (2020)	County	Florida
Adults who are obese	35.2%	27%
Adults who are overweight	36.5%	37.6%
Adults who currently smoke	20.70%	14.8%
Adults who are current e-cigarette smokers	4.80%	7.5%
Adults who engage in binge or heavy drinking	12.8%	18%
Adults who are sedentary	42.70%	26.5%
Adults who consume 2+ servings of fruits & vegetables per day	37.80%	36.7%

Behavioral risk factors estimate the prevalence of personal health behaviors that can affect morbidity and mortality. Engaging in negative behaviors can increase the likelihood of developing or worsening chronic diseases. While positive health behaviors can improve quality of life.

## Maternal & Child Health

### Selected Maternal Health Risk Factors By Race, 2020<sup>1</sup>



**12.6**  
Births per 1,000 females<sup>1</sup>

**40.8**  
Teen births per 1,000, females 15-19 years old<sup>1</sup>



**8.6**  
Infant deaths, per 1,000 Live Births<sup>1</sup>

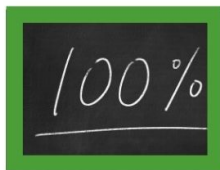
# Sociodemographics



**25.8%**  
Households receiving Food Stamps (SNAP)<sup>7</sup>



**8%**  
Unemployment rate as of August 2020<sup>8</sup>



**24.7%**  
People below 100% of the Federal Poverty Line<sup>9</sup>



**64.6%**  
Households with access to broadband internet access<sup>10</sup>



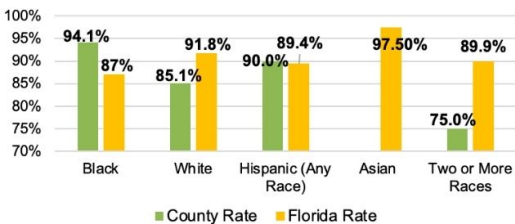
## Education

**10%**  
People with Less Than 9th Grade Education<sup>11</sup>

**1,154**  
People with a Bachelor's Degree<sup>11</sup>

During the 2020-2021 school year, Hardee county had a **88.3%** high school graduation rate compared to Florida's **90%** graduation rate.

### 2020-2021 High School Graduates by Race/Ethnicity Cohort<sup>12</sup>



## Health Access

Healthcare Providers & Resources (per 100,000) <sup>13</sup>	County	Florida
Total licensed Providers (Fiscal year 21-22)	10.9	314
Family practice physicians	0	19.2
Dentists	10.9	56.7
Pediatricians	3.6	21.9
Internists/Internal Medicine	3.6	47.3
OB/GYN's	0	9.2
Licensed Mental Health Counselors	18.1	57.3
<b>FACILITIES<sup>14</sup></b>	<b>County</b>	<b>Florida</b>
Total hospital beds	90.7	307.6
Total Acute care beds	90.7	248.9
Specialty Beds	0	58.6
Nursing Home beds <sup>14</sup>	377.2	386.5

**2,926**  
Uninsured individuals in Hardee County



# Sources



1. Florida Department of Health, Bureau of Vital Statistics, 2020.
2. US Bureau of the Census, American Community Survey, Table B01002, 2020.
3. US Bureau of the Census, American Community Survey, Table B19013, 2020.
4. Florida Behavioral Risk Factor Surveillance System telephone survey conducted by the Centers for Disease Control and Prevention (CDC) and Florida Department of Health Division of Community Health Promotion, 2019.
5. Florida Department of Health COVID-19 Response, Accessed 8/1/2021
6. Florida Agency for Health Care Administration (AHCA), 2020.
7. US Census Bureau DP03 Selected Economic Characteristics, 2020.
8. U.S. Department of Labor, Bureau of Labor Statistics, Local Area Unemployment Statistics Program, in cooperation with the Florida Department of Economic Opportunity, Bureau of Workforce Statistics and Economic Research, 2021.
9. US Census Bureau S1701 Poverty status in the past 12 months, 2020.
10. US Census Bureau S2801 Types of Computers and Internet Subscriptions, 2020.
11. US Census Bureau DP02 Selected Social Characteristics in the United States, 2020.
12. Florida Department of Education, Education Information and Accountability Services (EIAS), 2020.
13. Florida Department of Health, Division of Medical Quality Assurance, 2020.
14. Florida Agency for Health Care Administration (AHCA), 2020.