

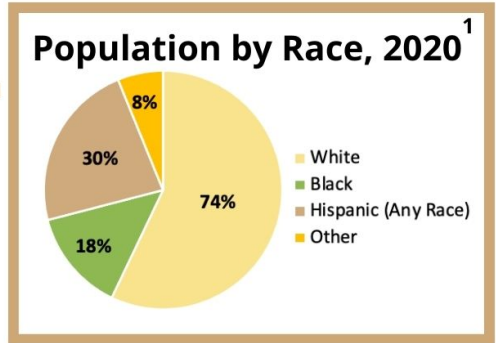
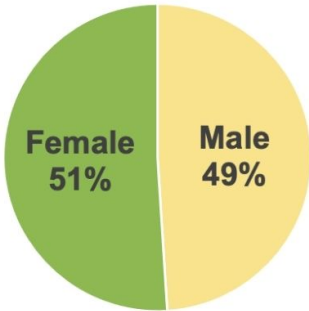
2022 HILLSBOROUGH COUNTY HEALTH PROFILE

Community demographics in 2020

1,481,163

people living in Hillsborough County ¹

Population by Gender, 2020 ¹



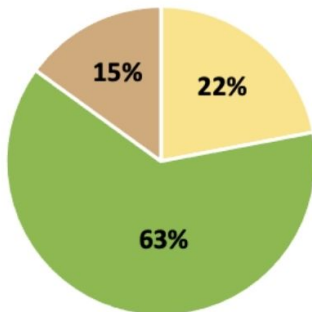
78.8 Years
Life expectancy ²

37.4 Years
Median age ²

\$60,566
Median income ³

27.1%
Adults with any disability ⁴

Population by Age, 2020 ¹



0-17 18-64 65+



1st quartile

Median income is \$2,863 higher than the state average

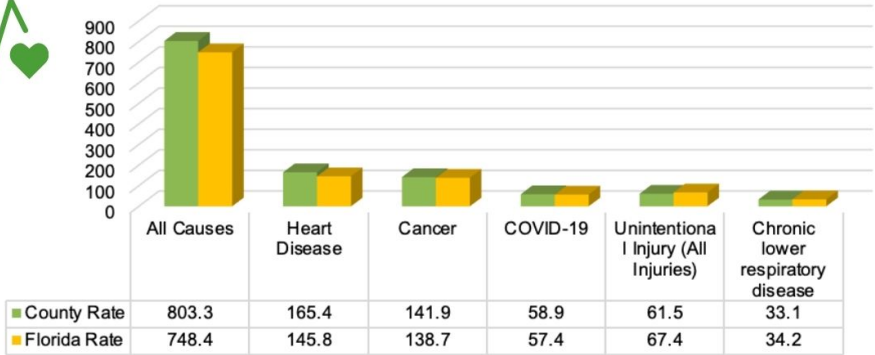
4th quartile

202.9 more hospitalizations from asthma than the state

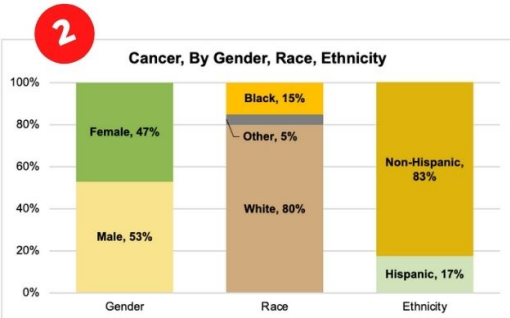
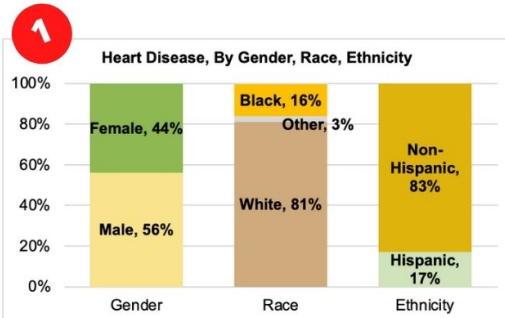
Rate of bacterial STD's is 156.6 per 100,000 higher than state average

Health Status

Age-adjusted Rates Top 5 Leading Causes of Death, 2020¹



Top 2 Leading Causes of Death, 2020¹



COVID-19⁵ (week of July 22-28, 2022)

4983
Cases

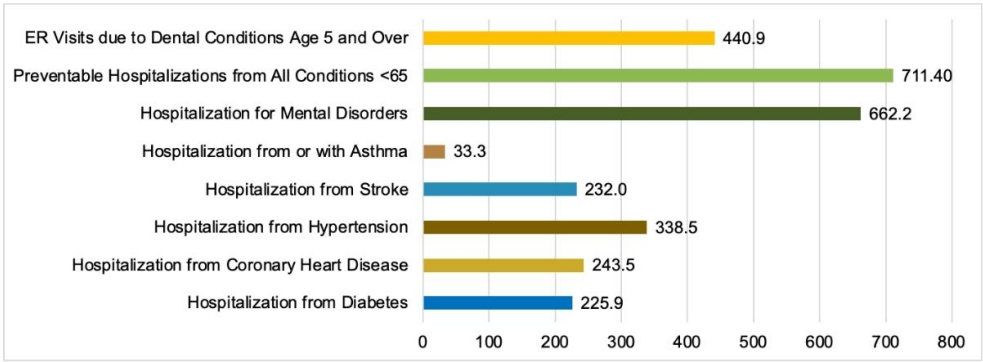
940,034
Hillsborough
county residents
Fully Vaccinated

72%
Individuals
12+ Fully
Vaccinated

77,565 Statewide deaths since March 2020

The COVID-19 pandemic began in January 2020. Individuals can protect themselves and others through vaccination as well as through safety measures such as social distancing, wearing a mask, and staying home when sick. At-home testing is now more readily available and may have an impact on cases reported. For the most up to date data on COVID-19, visit [cdc.gov/coronavirus](https://www.cdc.gov/coronavirus)

Hospitalization Rates (per 100,000)⁶



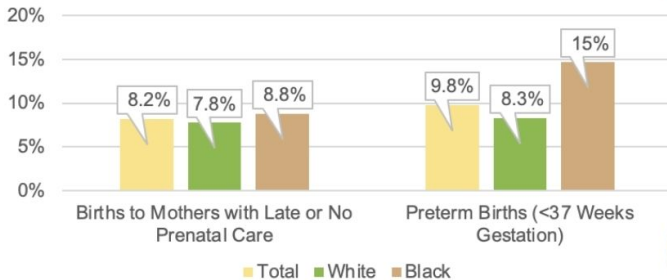
Behavioral risk factors⁴

Behavioral risk factors (2020)	County	Florida
Adults who are obese	30.2%	27%
Adults who are overweight	38.6%	37.6%
Adults who currently smoke	16%	14.8%
Adults who are current e-cigarette smokers	5.7%	7.5%
Adults who engage in binge or heavy drinking	17.1%	18%
Adults who are sedentary	27.4%	26.5%
Adults who consume 2+ servings of fruits & vegetables per day	28.7%	36.7%

Behavioral risk factors estimate the prevalence of personal health behaviors that can affect morbidity and mortality. Engaging in negative behaviors can increase the likelihood of developing or worsening chronic diseases. While positive health behaviors can improve quality of life.

Maternal & Child Health

Selected Maternal Health Risk Factors By Race, 2020¹



11.3

Births per 1,000 females¹

16.8

Teen births per 1,000, females 15-19 years old¹



7.2

Infant deaths, per 1,000 Live Births¹

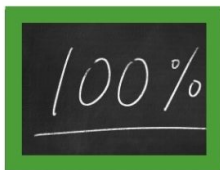
Sociodemographics



14%
Households receiving Food Stamps (SNAP)⁷



5.2%
Unemployment rate as of August 2020⁸



14%
People below 100% of the Federal Poverty Line⁹



89.6%
Households with access to broadband internet access¹⁰



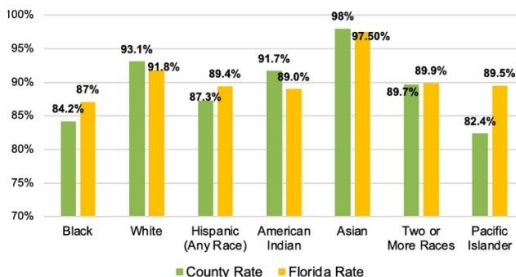
Education

4.6%
People with Less Than 9th Grade Education¹¹

219,537
People with a Bachelor's Degree¹¹

During the 2020-2021 school year, Hillsborough county had a **89.2%** high school graduation rate compared to Florida's **90%** graduation rate.

2020-2021 High School Graduates by Race/Ethnicity Cohort¹²



Health Access

Healthcare Providers & Resources (per 100,000) ³	County	Florida
Total licensed Providers (Fiscal year 21-22)	402.4	314
Family practice physicians	18.2	19.2
Dentists	62.9	56.7
Pediatricians	27.3	21.9
Internists/Internal Medicine	55.4	47.3
OB/GYN's	13.2	9.2
Licensed Mental Health Counselors	55.7	57.3
FACILITIES¹⁴	County	Florida
Total hospital beds	306.4	307.6
Total Acute care beds	260.9	248.9
Specialty Beds	45.5	58.6
Nursing Home beds ¹⁵	252.3	386.5

173,093
Uninsured individuals in Hillsborough County



Sources



1. Florida Department of Health, Bureau of Vital Statistics, 2020.
2. US Bureau of the Census, American Community Survey, Table B01002, 2020.
3. US Bureau of the Census, American Community Survey, Table B19013, 2020.
4. Florida Behavioral Risk Factor Surveillance System telephone survey conducted by the Centers for Disease Control and Prevention (CDC) and Florida Department of Health Division of Community Health Promotion, 2019.
5. Florida Department of Health COVID-19 Response, Accessed 8/1/2021
6. Florida Agency for Health Care Administration (AHCA), 2020.
7. US Census Bureau DP03 Selected Economic Characteristics, 2020.
8. U.S. Department of Labor, Bureau of Labor Statistics, Local Area Unemployment Statistics Program, in cooperation with the Florida Department of Economic Opportunity, Bureau of Workforce Statistics and Economic Research, 2021.
9. US Census Bureau S1701 Poverty status in the past 12 months, 2020.
10. US Census Bureau S2801 Types of Computers and Internet Subscriptions, 2020.
11. US Census Bureau DP02 Selected Social Characteristics in the United States, 2020.
12. Florida Department of Education, Education Information and Accountability Services (EIAS), 2020.
13. Florida Department of Health, Division of Medical Quality Assurance, 2020.
14. Florida Agency for Health Care Administration (AHCA), 2020.
15. Florida Agency for Health Care Administration (AHCA), 2020.