

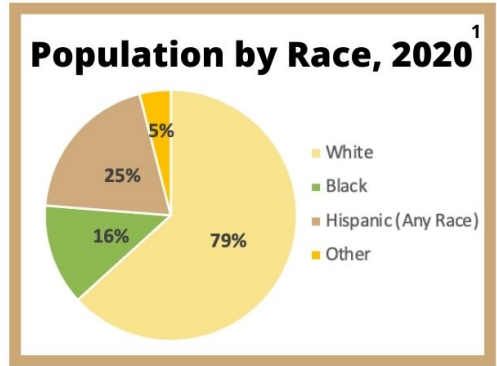
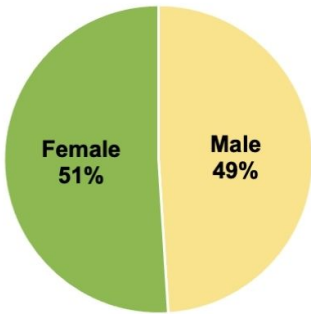
2022 POLK COUNTY HEALTH PROFILE

Community demographics in 2020

707,191

people living in Polk County ¹

Population by Gender, 2020 ¹



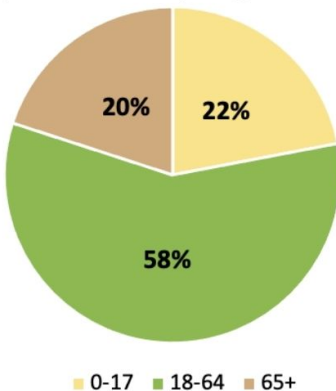
77.4 years
Life expectancy ²

40.2 years
Median age ²

\$51,353
Median income ³

40.5%
Adults with any disability ⁴

Population by Age, 2020 ¹



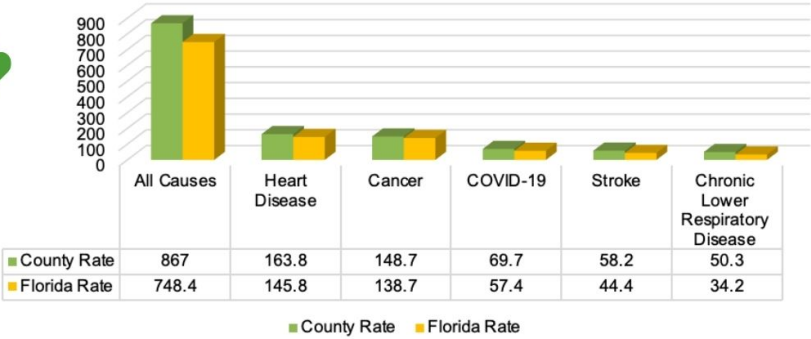
1st quartile
5.1% less adults engage in binge drinking in comparison to the state.

3rd quartile
1.8% more people living in Poverty than in Florida.

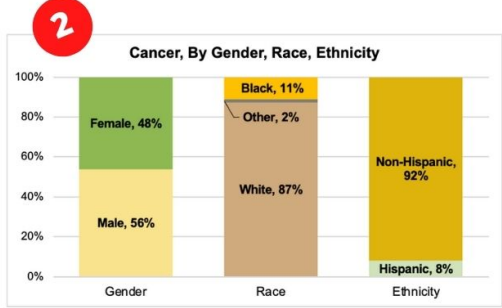
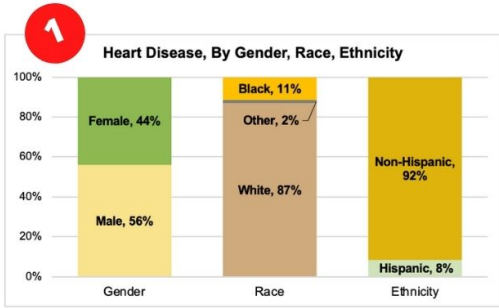
4th quartile
Polk County domestic violence offense cases are 182.8 per 100,000 higher than Florida.

Health Status

Age-adjusted Rates Top 5 Leading Causes of Death, 2020¹



Top 2 Leading Causes of Death, 2020¹



COVID-19 (week of July 22-28, 2022)

2810
Cases

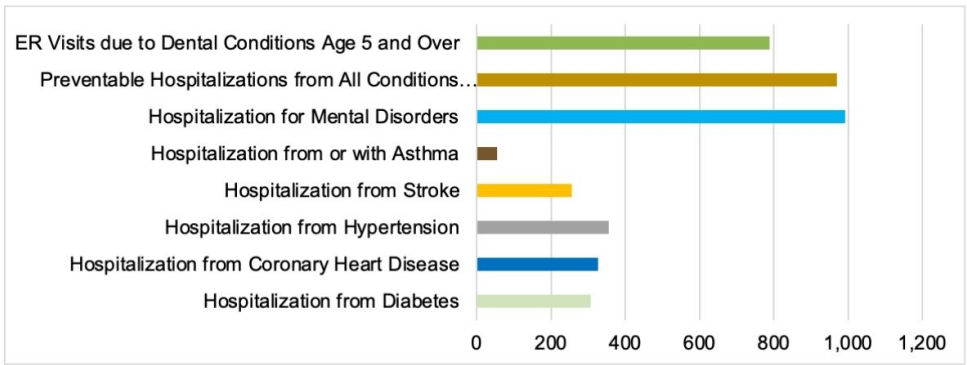
421,944
Polk county
population fully
vaccinated

66%
Individuals
12+ fully
vaccinated

77,565 Statewide deaths since March 2020

The COVID-19 pandemic began in January 2020. Individuals can protect themselves and others through vaccination as well as through safety measures such as social distancing, wearing a mask, and staying home when sick. At-home testing is now more readily available and may have an impact on cases reported. For the most up to date data on COVID-19, visit [cdc.gov/coronavirus](https://www.cdc.gov/coronavirus)

Hospitalization Rates (per 100,000)⁶



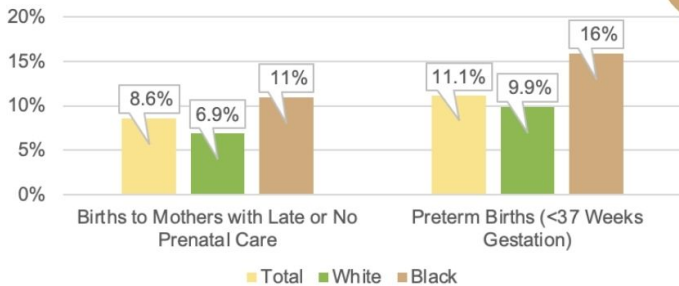
Behavioral risk factors⁴

Behavioral risk factors (2020)	County	Florida
Adults who are obese	36.3%	27%
Adults who are overweight	35%	37.6%
Adults who currently smoke	17.8	14.8%
Adults who are current e-cigarette smokers	7.0%	7.5%
Adults who engage in binge or heavy drinking	12.9%	18%
Adults who are sedentary	31.7%	26.5%
Adults who consume 2+ servings of fruits & vegetables per day	40.2%	36.7%

Behavioral risk factors estimate the prevalence of personal health behaviors that can affect morbidity and mortality. Engaging in negative behaviors can increase the likelihood of developing or worsening chronic diseases. While positive health behaviors can improve quality of life.

Maternal & Child Health

Selected Maternal Health Risk Factors By Race, 2020¹



11.3

Births per 1,000 females¹

22.3

Teen births per 1,000, ¹ females 15-19 years old



7.4

Infant deaths, per 1,000 Live Births¹

Sociodemographics



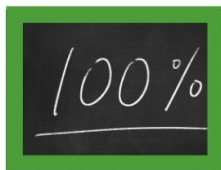
15%

Households receiving Food Stamps (SNAP)⁷



5%

Unemployment rate as of August 2020⁸



15.1%

People below 100% of the Federal Poverty Line⁹



75.9%

Households with access to broadband internet access¹⁰



Education

5%

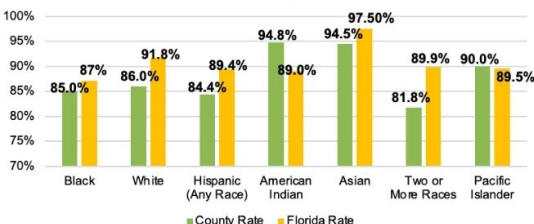
People with Less Than 9th Grade Education¹¹

66,256

People with a Bachelor's Degree¹¹

During the 2020-2021 school year, Polk county had a **85.3%** high school graduation rate compared to Florida's **90%** graduation rate.

2020-2021 High School Graduates by Race/Ethnicity Cohort¹²



Health Access

Healthcare Providers & Resources (per 100,000) ¹³	County	Florida
Total licensed Providers (Fiscal year 21-22)	155.7	314
Family practice physicians	10.9	19.2
Dentists	24.9	56.7
Pediatricians	9.6	21.9
Internists/Internal Medicine	29.4	47.3
OB/GYN's	4.4	9.2
Licensed Mental Health Counselors	41	57.3
FACILITIES¹⁴	County	Florida
Total hospital beds	255.4	307.6
Total Acute care beds	225.3	248.9
Specialty Beds	30.1	58.6
Nursing Home beds ¹⁴	457.9	386.5

78,159

Individuals Uninsured in Polk County



Sources

1. Florida Department of Health, Bureau of Vital Statistics, 2020.
2. US Bureau of the Census, American Community Survey, Table B01002, 2020.
3. US Bureau of the Census, American Community Survey, Table B19013, 2020.
4. Florida Behavioral Risk Factor Surveillance System telephone survey conducted by the Centers for Disease Control and Prevention (CDC) and Florida Department of Health Division of Community Health Promotion, 2019.
5. Florida Department of Health COVID-19 Response, Accessed 8/1/2021
6. Florida Agency for Health Care Administration (AHCA), 2020.
7. US Census Bureau DP03 Selected Economic Characteristics, 2020.
8. U.S. Department of Labor, Bureau of Labor Statistics, Local Area Unemployment Statistics Program, in cooperation with the Florida Department of Economic Opportunity, Bureau of Workforce Statistics and Economic Research, 2021.
9. US Census Bureau S1701 Poverty status in the past 12 months, 2020.
10. US Census Bureau S2801 Types of Computers and Internet Subscriptions, 2020.
11. US Census Bureau DP02 Selected Social Characteristics in the United States, 2020.
12. Florida Department of Education, Education Information and Accountability Services (EIAS), 2020.
13. Florida Department of Health, Division of Medical Quality Assurance, 2020.
14. Florida Agency for Health Care Administration (AHCA), 2020.